

[www.fri.uni-lj.si/en](http://www.fri.uni-lj.si/en)

[doctoral.studies@fri.uni-lj.si](mailto:doctoral.studies@fri.uni-lj.si)

+386 1 479 8123

# Prospective Student Day

Doctoral Study Programme Computer and Information Science



UNIVERSITY  
OF LJUBLJANA

**FRI**

Faculty of Computer  
and Information Science



**FRI**

UNIVERSITY  
OF LJUBLJANA

Faculty of Computer  
and Information Science

**What  
doctoral students  
like the most?**

# Doctoral study = Research



**FRI**

UNIVERSITY  
OF LJUBLJANA

Faculty of Computer  
and Information Science



**19**  
Laboratories



**60**  
Mentors

[fri.uni-lj.si/en/research/laboratories](http://fri.uni-lj.si/en/research/laboratories)

[fri.uni-lj.si/en/mentors](http://fri.uni-lj.si/en/mentors)

# Research



FRI

UNIVERSITY  
OF LJUBLJANA

Faculty of Computer  
and Information Science



Integrated Systems



Biometry



Cyber Security



Language technologies

# Research



**FRI**

UNIVERSITY  
OF LJUBLJANA

Faculty of Computer  
and Information Science



Blockchain and  
Cloud Computing



Data mining



Artificial Intelligence



Supercomputing



Computer Vision



**FRI**

UNIVERZA  
V LJUBLJANI

Fakulteta za računalništvo  
in informatiko

# Modern Facilities



**12 Computer Classrooms**



**19 Research Laboratories**

**Access to  
Supercomputing  
technologies**



# Computing infrastructure



FRI

UNIVERZA  
V LJUBLJANI

Fakulteta za računalništvo  
in informatiko





**FRI**

UNIVERZA  
V LJUBLJANI

Fakulteta za računalništvo  
in informatiko

9x Mellanox ConnectX-6 VPI HDR InfiniBand/200Gb Ethernet

450GB/sec Bi-directional Bandwidth

Dual 64-core AMD CPUs and 2TB System Memory

3.2X More Cores to Power the Most Intensive AI Jobs

8 NVIDIA A100 GPUs with 320GB TOTAL GPU Memory

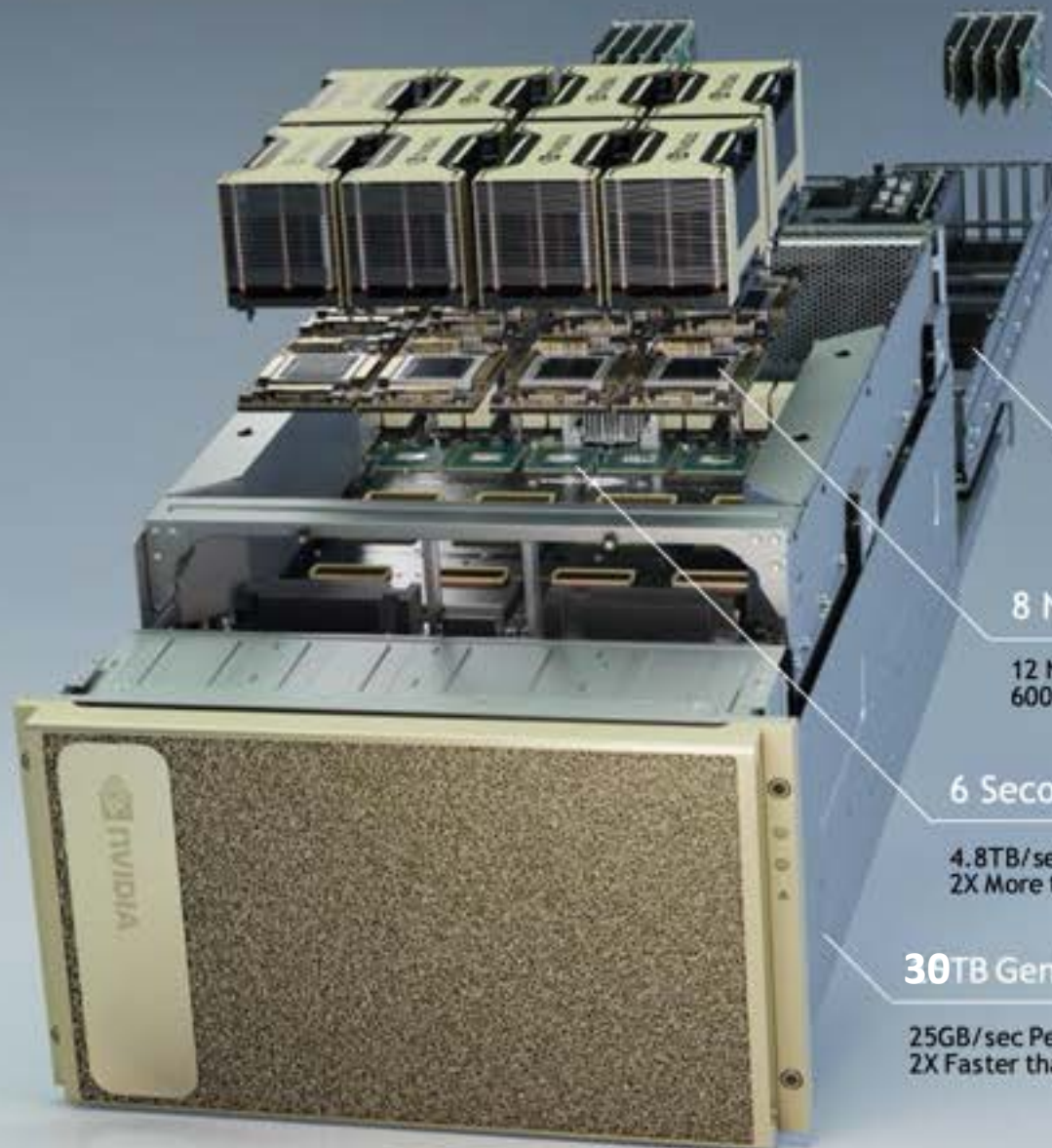
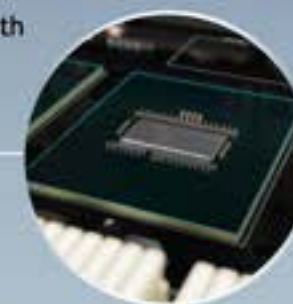
12 NVLinks / GPU  
600GB/sec GPU-to-GPU Bi-directional Bandwidth

6 Second Generation NVSwitches

4.8TB/sec Bi-directional Bandwidth  
2X More than Previous Generation NVSwitch

30TB Gen4 NVME SSDs

25GB/sec Peak Bandwidth  
2X Faster than Gen3 NVME SSDs







**FRI**

UNIVERSITY  
OF LJUBLJANA

Faculty of Computer  
and Information Science

**What is your  
research topic?**





**FRI**

UNIVERSITY  
OF LJUBLJANA

Faculty of Computer  
and Information Science

**What is your  
research topic?**



**FRI**

**UNIVERSITY  
OF LJUBLJANA**

**Faculty of Computer  
and Information Science**

**What is your  
research topic?**





**FRI**

UNIVERSITY  
OF LJUBLJANA

Faculty of Computer  
and Information Science

**What is your  
research topic?**





**FRI**

UNIVERSITY  
OF LJUBLJANA

Faculty of Computer  
and Information Science

# Meet Doctoral Student Yannick Kuhar





**FRI**

UNIVERSITY  
OF LJUBLJANA

Faculty of Computer  
and Information Science

## 1<sup>st</sup> Year



## 2<sup>nd</sup> Year



## 3<sup>rd</sup> Year



## 4<sup>th</sup> Year



# Study Programme



**FRI**

UNIVERSITY  
OF LJUBLJANA

Faculty of Computer  
and Information Science

# Elective Courses

- Lecture-type courses (biennially)
- Individual-research-type courses
  
- Incremental Learning from Data Streams
- Tensor Networks for Machine Learning
- Advanced Topics in Ubiquitous Sensing and Learning
- Selected Topics in Software Engineering
- Recent Advances in Combinatorial Solvers
- Heterogeneous Computing Platforms
- Selected Topics in Analysis of Sound Signals
  
- Selected Topics from Computer Graphics and Visualization
- Deep Learning for Computer Vision
- In-Depth Computer Vision Research
- Advanced Image-based Biometrics
- Advanced Algorithms for Search and Planning
- Machine Learning for Language and Graphs
- INFOSEC of Socio-Technical Systems



**FRI**

UNIVERSITY  
OF LJUBLJANA

Faculty of Computer  
and Information Science

# Doctoral theses defences

*Selection 2022-24*

- Explainable artificial intelligence
- Information security
- Secure software development
- Deep reinforcement learning for target-driven robot navigation
- Face deidentification with generative neural networks
- Obstacle detection for autonomous surface vehicles
- Detecting surface anomalies with deep learning
- Cross-lingual word embeddings

<https://repozitorij.uni-lj.si/Statistika.php>



# Doctoral Students' Careers

*Alumni 2021-2024*



**FRI**

UNIVERSITY  
OF LJUBLJANA

Faculty of Computer  
and Information Science

## Academia

Teaching Assistant  
Assistant Professor  
Researcher

## Industry

Data Scientist  
Lead Data Analyst  
Data Science Team Lead  
Software Architect  
Tech Lead  
Senior DevOps Engineer  
Cloud Solution Architect  
Senior DevOps Engineer  
Product Steward Lead

**Databox**  
**Genialis**  
**Viaduct**  
**Outbrain**  
**Aleph Group Inc.**  
**Novartis**  
**Playrix**  
**Philips**

# Most Successful Doctoral Students



**Asst. Prof. dr. Marinka Žitnik,**  
2015,  
Harvard University



**dr. Sanja Fidler,**  
2010,  
Vice-President of AI  
Research, NVIDIA



**dr. Jure Žbontar,**  
2016,  
Research Engineer,  
OpenAI



**Mercator**

**dr. Martin Možina,**  
2009,  
Lead Data Scientist, Mercator  
d.d.



**dr. Miha Štajdohar,**  
2012,  
CTO & Co-founder,  
Genialis



**dr. Martin Jakomin,**  
2019,  
Data Science Team Lead  
Outbrain



**FRI**

UNIVERSITY  
OF LJUBLJANA

Faculty of Computer  
and Information Science

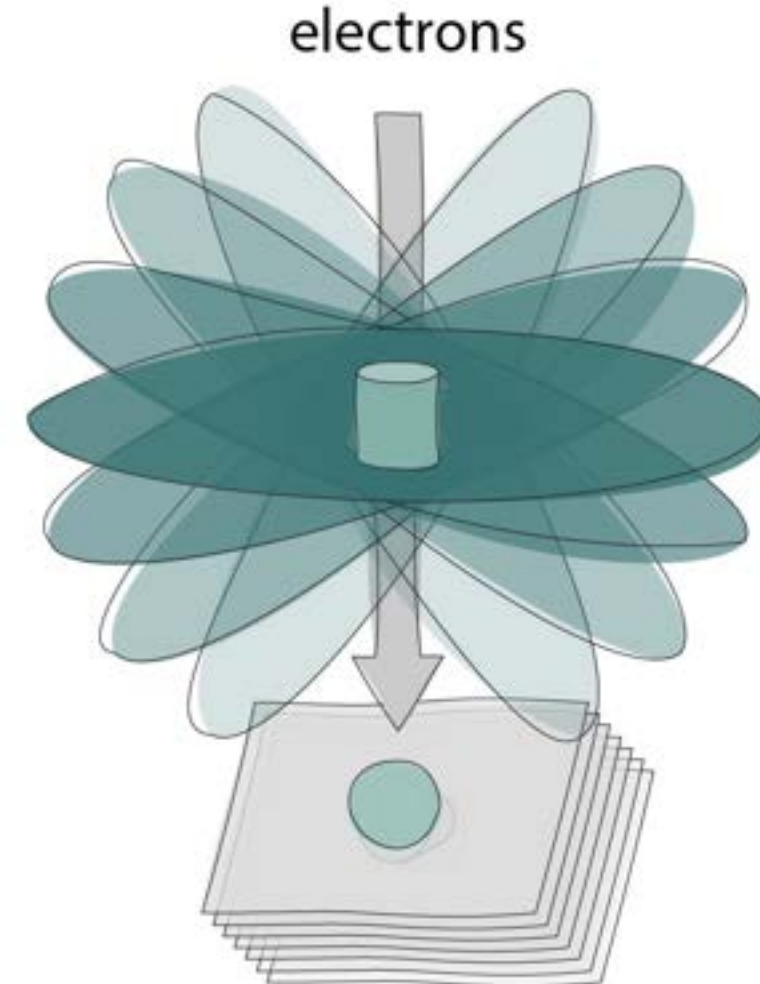
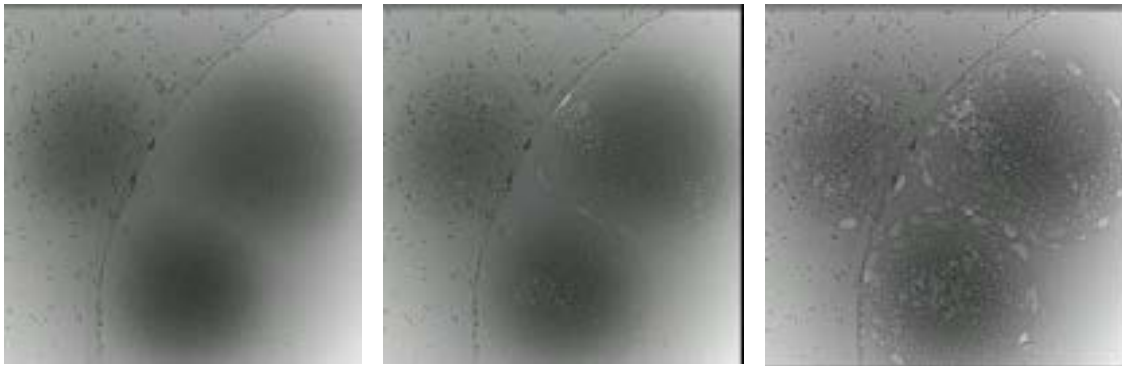
# Meet Doctoral Student Eva Boneš



# Doctoral Study Research

Eva Boneš

4D Reconstruction for  
High-Dose Cryo-Electron  
Tomography Data



## Computer graphics and visualization

### *Biological processes and data on micro/nano level*

Asst. prof. dr. Ciril Bohak: ciril.bohak@fri.uni-lj.si

- Reconstruction of electron microscopy data:  
e.g. cryo-ET.
- Segmentation and analysis of microscopy data:  
e.g. structure, background segmentation.
- (Procedural) Modeling of biological systems on a molecular level:  
e.g. viruses, bacteria, cell organelles.
- Simulating parts of electron microscope using  
deep learning models: e.g. Simulating noise, electron beam,  
sensors.
- Deep learning methods in computer graphics:  
e.g. end-to-end differentiable rendering of volumetric data.



<https://cemse.kaust.edu.sa/vcc>



# International Collaborations

## Collaborations with world-renowned institutions:

- **Joint Research Centre of European Commission** (Italy),
- **The European Organization for Nuclear Research – CERN** (Switzerland);
- **Kyungpook National University** (South Korea),
- **University College London** (UK),
- **Baylor College of Medicine** (USA),
- **University of Birmingham** (UK);
- **Czech Technical University in Prague** (Czech republic);
- **Alpe-Adria University Klagenfurt** (Austria);
- **KAUST – King Abdullah University of Science and Technology** (Saudi Arabia);



**200 +**  
**Collaborating  
institutions**

*Internal fund for research and study visits abroad!*



**FRI**

UNIVERSITY  
OF LJUBLJANA

Faculty of Computer  
and Information Science



## About Slovenia

Slovenia is one of the greenest European countries. Mediterranean Coast, snowy mountain tops of Julian Alps or thermal spa resorts in the Eastern part, famous for its wines, are all just an hour's drive from Ljubljana, the lively and picturesque capital of Slovenia.



## Student Life in Ljubljana

- Peaceful and safe city
- Low living costs:
  - 400–600€/month
  - Subsidized lunch, transportation
  - Dorms for exchange students
- Tech events for students

# Study in Ljubljana, discover Slovenia





# How to Apply for the Doctoral Programme?

## Apply Online

Apply at eVŠ Portal  
[portal.evs.gov.si/prijava](https://portal.evs.gov.si/prijava)

Master or pre-bologna  
equivalent study programme

## Application Deadline

**1 June 2024**

Enrolment in September 2024

## Application Enclosures

- a well-structured CV
- a certified copy of your bachelor or master's degree
- a GPA certificate of exams and tutorials
- a motivation letter
- 2 recommendation letters
- mentors's acceptance statement
- short conceptual design of the research work

## Tuition Fees

4200 € for 1<sup>st</sup> and 2<sup>nd</sup> year

3000 € for 3<sup>rd</sup> and 4<sup>th</sup> year

## Contact

Mrs. Zdenka Velikonja

E: [zdenka.velikonja@fri.uni-lj.si](mailto:zdenka.velikonja@fri.uni-lj.si)

T: +386 1 479 8123





# Assistance to International Students by International Office

## Assistance in applying for:

- study programme online via eVŠ platform
- visa, residence permit
- JRC call

## Advising on:

- documentation for recognition of education
- finding an apartment in Ljubljana
- basic information about living in Slovenia

---

## Contact Information

Ms. Vesna Gračner

E: [international.office@fri.uni-lj.si](mailto:international.office@fri.uni-lj.si)

T: +386 1 479 8249

# Open positions for Doctoral Students



UNIVERSITY  
OF LJUBLJANA

**FRI**

Faculty of Computer  
and Information Science

<https://fri.uni-lj.si/en/career-faculty>

- Teaching assistants
- Junior researcher positions
- Researcher positions



**FRI**

UNIVERSITY  
OF LJUBLJANA

Faculty of Computer  
and Information Science

# Junior Researcher positions: 5

*Mladi raziskovalci (MR)*

**Application deadline: 9 April 2024**

## Mentors with positions:

- **Ciril Bohak:** engineering, computer and information science, humanities and linguistics,
- **Luka Čehovin Zajc:** computer vision, deep learning and remote sensing,
- **Franc Jager:** automated biomedical signal processing and digital signal processing,
- **Matjaž Kukar:** computer science and informatics, intelligent systems - software and interdisciplinary research,
- **Denis Trček:** computer science and informatics, cyber security.

# Open positions

## Laboratory for data technologies

### Researchers

- Software engineering and DevOps, full-stack development,
- development of software solutions for decentralised digital identity,
- micro-competency microcredentials,
- cloud computing and service orchestration, integration with sensor systems,
- development of new languages for describing artificial intelligence methods,
- mobile applications,
- the use of decentralised knowledge bases,
- the development of Semantic Web technologies; and others.
- Contact: [vlado.stankovski@fri.uni-lj.si](mailto:vlado.stankovski@fri.uni-lj.si)



**ExtremeXP**



# Open positions

## Language and speech technologies

- Researcher

**Work on applied and research projects related to the use of language and speech technologies**

(speech recognition and synthesis, text processing, large language models, model learning and adaptation, high-performance infrastructure management, inference and microservices).

Contact: [ilb@fri.uni-lj.si](mailto:ilb@fri.uni-lj.si)

- Researcher

**Work on applied and research projects related to the use of language and speech technologies**

Contact: [Marko.Bajec@fri.uni-lj.si](mailto:Marko.Bajec@fri.uni-lj.si)



**FRI**

UNIVERSITY  
OF LJUBLJANA

Faculty of Computer  
and Information Science



# Other Open Positions



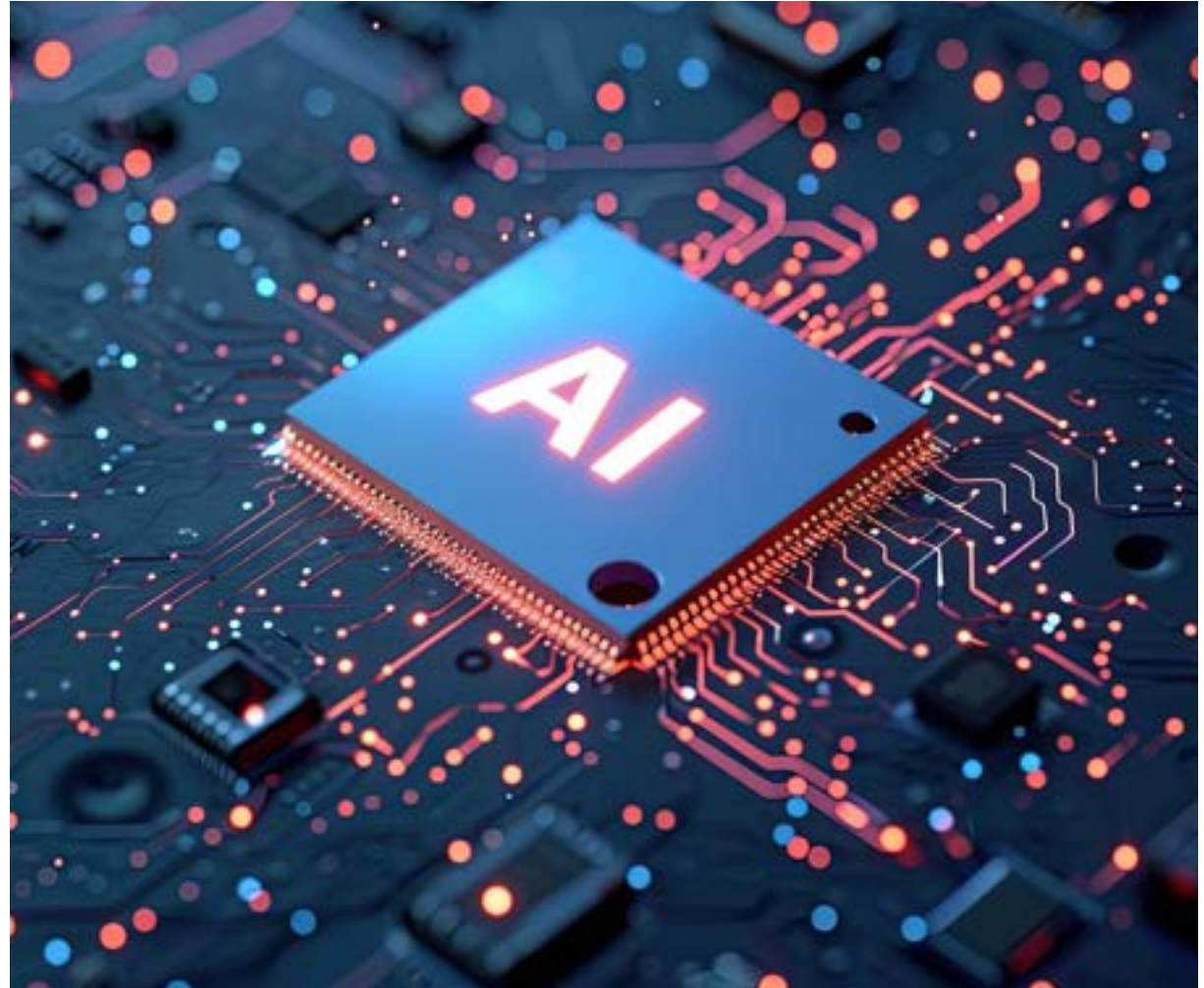
**FRI**

UNIVERSITY  
OF LJUBLJANA

Faculty of Computer  
and Information Science

- Researcher  
**Machine learning with a focus on explainable artificial intelligence, large language models**  
Contact: *Marko.RobnikSikonja@fri.uni-lj.si*
- Researcher  
**Natural Language Processing**  
Contact: *Marko.RobnikSikonja@fri.uni-lj.si*

<https://fri.uni-lj.si/en/career-faculty>



# Other Open Positions



**FRI**

UNIVERSITY  
OF LJUBLJANA

Faculty of Computer  
and Information Science

- Research assistant and teaching assistant  
**Computer vision; participation in projects related to image biometrics**  
Contact: *Peter.Peer@fri.uni-lj.si*
- Research assistant and teaching assistant  
**Context-aware AI through distributed LLM fine-tuning on mobile devices**  
Contact: *Veljko.Pejovic@fri.uni-lj.si*

<https://fri.uni-lj.si/en/career-faculty>



# Questions & Answers



Scan to ask a question:





[www.fri.uni-lj.si/en](http://www.fri.uni-lj.si/en)

[doctoral.studies@fri.uni-lj.si](mailto:doctoral.studies@fri.uni-lj.si)

+386 1 479 8123



UNIVERSITY  
OF LJUBLJANA

**FRI**

Faculty of Computer  
and Information Science

